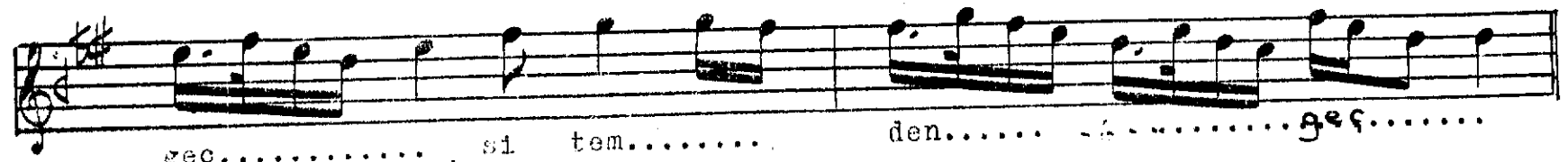
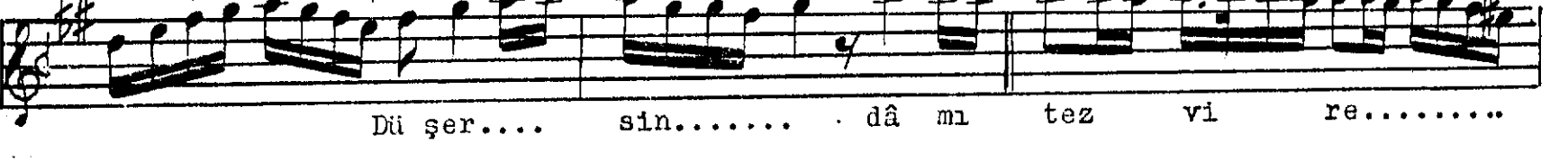
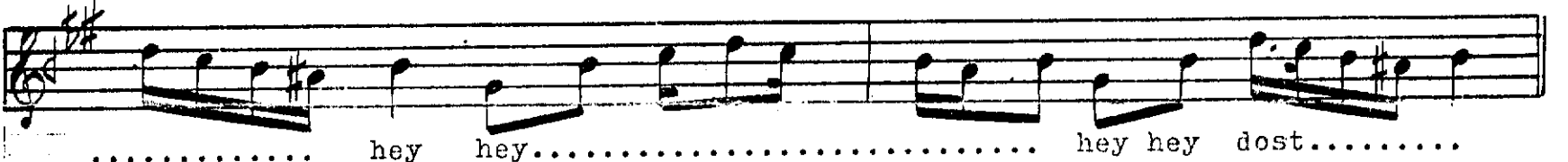
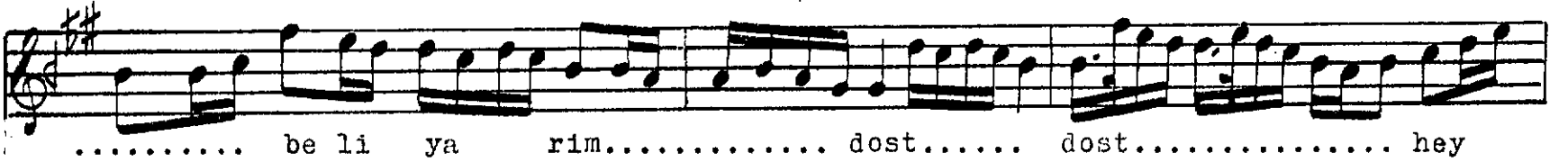
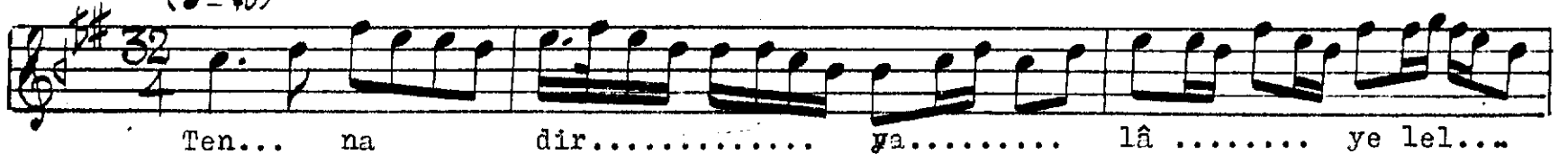
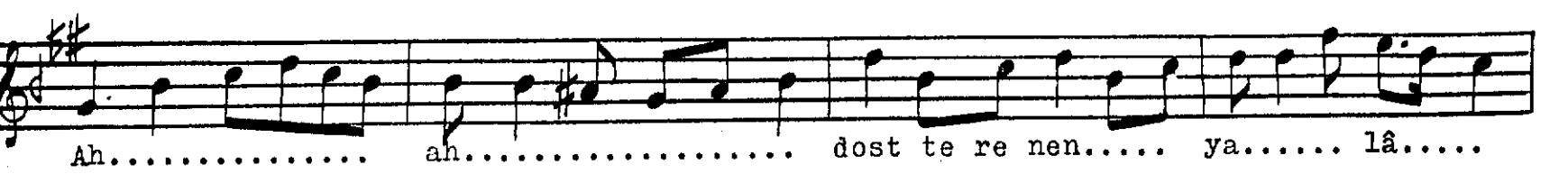
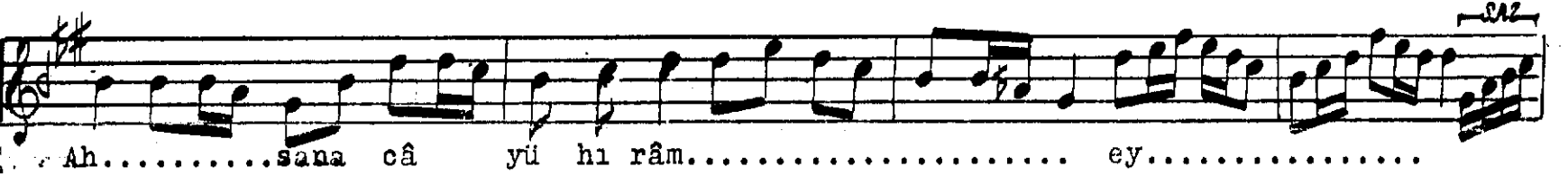
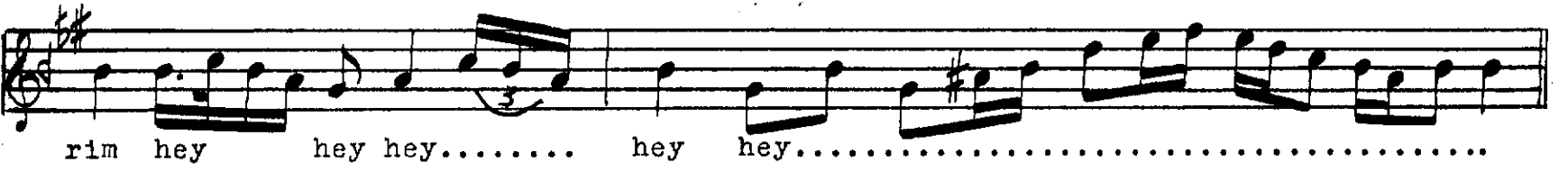


(♩ = 70)





Dost..... yelelele lel      dost..... hey.....


 Der Herr ist mein Fels in der Noth

Dost..... dost..... hey.....yar dost... hey ya rishah tenenen

te ne... nen ni dir dir na va lâ..... ye le.. lel li

te ne... nen ni dir dir na ya lâ..... ye le.. lel li

dost..... yar..... a man a man..... a man      ten tenenen

Ya..... lâ... yel li yar.... yar yar dost.. yar dost..... yar

( YÜRÜK SEMÂİ )

Musical notation for the song "TUMBUH SEMAI". The notation is written on a single staff with a treble clef and a key signature of one sharp (F#). The melody consists of several measures, including a double bar line and a change in time signature to 6/8.

hey..... hey..... Ne sî mi nev ba hâ rı gûlgibî..

sah nı e men den ge..... emen den ge medir.....bu

men gi li hâ kô de â nam ib tiyên ot mek

men zi li..... hâ kî de â ram... ih tiyâr.. et mek

Se nin candıryerin

ey..... ey..... ey.....

tî ri dil ber ah ah..... sa<sup>n</sup> be den. den..... ge<sup>c</sup> bu bâ zâr. iç re düş mez

For ladies and gentlemen, here we are

dâ ne ..... Eş kim gi bi gev her.. ge ley can.....

riş      te      si      şim   den ge ru   dür   rü   aden....   den..... geç